



# Maritime Security An Introduction

Michael McNicholas



AMSTERDAM • BOSTON • HEIDELBERG • LONDON  
NEW YORK • OXFORD • PARIS • SAN DIEGO SAN  
FRANCISCO • SINGAPORE • SYDNEY • TOKYO

Butterworth-Heinemann is an imprint of Elsevier




Acquisitions Editor: Pamela Chester  
Marketing Manager: Marissa Hederson  
Project Manager: Jay Donahue  
Cover Designer: Eric DeCicco  
Compositor: SPI Technologies India Pvt. Ltd.  
Cover Printer: Phoenix Color Corp.  
Text Printer/Binder: Sheridan Books

Butterworth-Heinemann is an imprint of Elsevier  
30 Corporate Drive, Suite 400, Burlington, MA 01803, USA  
Linacre House, Jordan Hill, Oxford OX2 8DP, UK

Copyright # 2008, Elsevier Inc. All rights reserved.

No part of this publication may be reproduced, stored in a retrieval system, or transmitted in any form or by any means, electronic, mechanical, photocopying, recording, or otherwise, without the prior written permission of the publisher.

Permissions may be sought directly from Elsevier's Science & Technology Rights Department in Oxford, UK: phone: (+44) 1865 843830, fax: (+44) 1865 853333, E-mail: [permissions@elsevier.com](mailto:permissions@elsevier.com). You may also complete your request online via the Elsevier homepage (<http://elsevier.com>), by selecting "Support & Contact" then "Copyright and Permission" and then "Obtaining Permissions."

 Recognizing the importance of preserving what has been written, Elsevier prints its books on acid-free paper whenever possible.

Library of Congress Cataloging-in-Publication Data  
Application submitted

British Library Cataloguing-in-Publication Data  
A catalogue record for this book is available from the British Library.

ISBN: 978-0-12-370859-5

For information on all Butterworth-Heinemann publications visit our Web site at [www.books.elsevier.com](http://www.books.elsevier.com)

Printed in The United States of America 07 08 09 10 11 12 10 9 8 7 6 5 4 3 2 1





# Sample Illustrations



Coke in the front wall of reefer – Feb 07 – Chiquita reefer – 1



Coke in the front wall of reefer – Feb 07 – Chiquita reefer – 2



Coke in the front wall of reefer – Feb 07 – Chiquita reefer – 3





In both of the above cases, liquid cocaine was mixed with the legitimate liquid in the cargo. Suspicious information in the documentation led a K-9 Team to select these cargoes for additional scrutiny and resulting seizures.



Inspection of this pallet of bananas at time of loading in Turbo, Colombia detected a false compartment and a stowaway hiding inside.





One of 5 vehicles being shipped from Panama to Germany. A Narcotics Detection K-9 Team alerted on each of the vehicles, each which held 50 kilos of cocaine hiding in the floorboard.



A total of 46 kilos of cocaine were stuffed into pockets of these two vests, worn by drug couriers who boarded in Buenaventura, Colombia.



Which of the bananas in the box are fake?





The fake ones are plastic and have a cocaine plug.

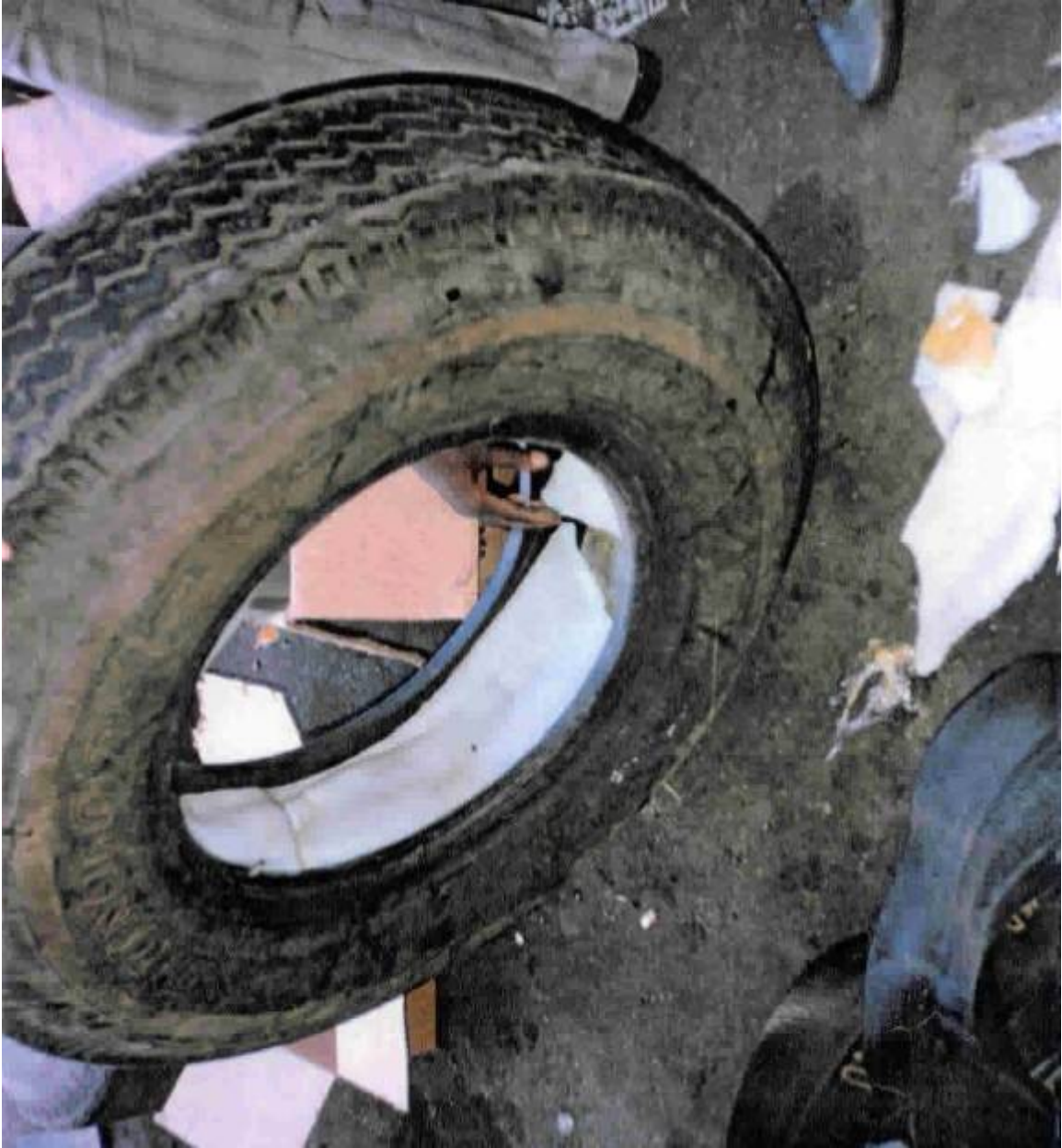


The roof cover of this trailer had been removed, insulation gutted, and numerous bales of drugs inserted.



The floor of this refrigerated container was lifted and kilos stacked between the floor and the underside support.





The interior of this tire, which was mounted on a container chassis, was lined with kilos of drugs.



The photo on the left is the position of the seal when affixed at Exporter warehouse after cargo loading (note bottle portion is *above* the locking arm latch). The center photo is the position of the seal when the container arrived at the Importer in the US (note bottle portion is *below* the locking arm latch). The picture on the right reveals that upon close examination the bottom of the bottle portion was likely cut with a jeweler's knife or "egacto" blade along the seam, exposing the metal bottom once removed. The bottom was drilled-out and the "locking rings" expanded and manipulated to permit undetected removal/reaffixing of the seal. The plastic bottle-covering was re-assembled using super glue. The workmanship was very good and not easily detected – not even at the Importer's location.

Smuggling technique via container seal manipulation.



Drugs hidden in the door panels.



This large metal tube, also known as a “torpedo”, was attached with brackets to the underside of a cargo ship. This torpedo held dozens of kilos of cocaine and heroin.





These shoes were worn onboard a cargo ship in Ecuador by a Crewmember. Unfortunately, the Crewmember tested the product – extremely pure cocaine – and died immediately.



*Stowaways also use bamboo poles to access the Ship Waterside. The pole has an iron hook affixed to the top to grab the Deck and pieces of rubber tied at intervals to serve as hand-holds. The bamboo naturally has air pockets so when one submerges it under the water – and then let go – it shoots upward through the stowaway's hands and can be guided to hook to the Deck railing or actually Deck.*

The infamous stowaway pole.



Typical provisions carried onboard by stowaways for the journey to the US or Europe.





Photos of melons stuffed with drugs and other contraband.